

Powercor
AUSTRALIA

MELBOURNE TO WARRNAMBOOL

CYCLING CLASSIC



2023 TECHNICAL GUIDE



CONTENTS

SECTION 1 – INTRODUCTION 2

WELCOME FROM THE CHAIRMAN 2

WELCOME FROM THE RACE DIRECTOR 4

HONOUR ROLL – *Last 15 Years* 4

EVENT PARTNERS 5

SECTION 2 – EVENT DETAILS 6

RACE SCHEDULE 6

CONTACT LIST 6

MEDIA & COMMUNICATIONS 7

MEETINGS 8

SECTION 3 – EVENT REGULATIONS 10

GENERAL REGULATIONS 10

TECHNICAL REGULATIONS 12

SECTION 4 – RACE DETAILS 22

SECTION 5 – CONVOY CODE OF CONDUCT 35

SECTION 6 – APPENDICES 37



SECTION 1 – INTRODUCTION

WELCOME FROM THE CHAIRMAN

The Warrnambool Citizens Road Race Committee is delighted to welcome the cycling community to Warrnambool for the Melbourne to Warrnambool Cycling Festival.

The Powercor Melbourne to Warrnambool Cycling Classic is the second oldest one day cycling classic in the world, the oldest in Australia, and the second longest one day cycling classic in the world. Its Honour Roll speaks for itself, it is the true cycling monument of Australia, and one of the nation's great sporting events.

Alongside “The Warrny” stands the Lochard Energy Warrnambool Women’s Cycling Classic, in its second year, quickly establishing itself as a classic event on the women’s cycling calendar.

Our weekend is now a Cycling Festival, with our cornerstone events joined by the Royal Bikes Port Campbell to Warrnambool Handicap, Sunday’s Warrnambool Criterium and the Lady Bay Resort Legends of Cycling Dinner.

127 years since the first Warrny, another grand race awaits. We love the new course, now five years old! It showcases the best of South West Victoria, beautiful rolling hills, lush valleys, to the raw harshness of the Great Ocean Road cliffs.

The Warrny is very dear to Warrnambool’s heart. We delight in holding this event each year and having the best cyclists fight it out for the coveted title of being a Warrny winner.

Our committee has once again worked extremely closely with Karin Jones and her team at KSJ Events. The enthusiasm, knowledge and unmatched professionalism of Karin and her team ensures the delivery of quality events.

Community enthusiasm, elbow grease, quality management and the all-important generosity of our commercial partners is what makes our events possible.

We have fantastic corporate partners. Powercor stand by iconic regional sporting events throughout Victoria. Now in its fifth year, we are delighted to have Powercor as our major Melbourne to Warrnambool Cycling Classic sponsor.

Lochard Energy enthusiastically support the Warrnambool Women’s Cycling Classic. We are heartened and grateful to have such strong corporate support.

Warrnambool City Council, the Victorian State Government, Anchor Point Village, KFC, Deakin University, Avalon Airport, Lady Bay Resort, Royal Bikes and 3YBFM are all magnificent partners to work with.

All our partners recognise the importance to the sporting and cultural fabric of the Warrny and give so that we can deliver this Australian cycling monument.

In recent years we have honoured our Warrny Legends. The Warrny makes legends and each year we recognise someone who has left an indelible mark on the Warrny. Our recent legends Joel Pearson, Peter “Bulldog Besanko”, Tim Decker and Jim Dart, will this year be joined by local cycling legend Jamie Drew.



Two of Australia's toughest cycling races have Jamie's name inscribed on the honour board twice, the Grafton to Inverell, and the Warrny, winning on Raglan Parade in 1999 and 2002. If his second place in 2003 had been a win, Jamie would have joined Bulldog Besanko and David Allan as our only three-time champions. Throw in the 2000 Australian Road Race Championship and there is an impressive cycling CV. Jamie will present our winners on the podium, and we look forward to hearing from him at our Legends of Cycling Dinner.

I wish all the cyclists, their teams and supporters all the best, and look forward to another cracking Warrny.

Finally, a huge acknowledgment to the members of the Warrnambool Citizens Road Race Committee, who have once again given their all to deliver the Melbourne to Warrnambool Cycling Festival.

Shane Wilson

Executive Officer

Warrnambool Citizens Road Race Committee

WELCOME FROM THE RACE DIRECTOR

Once again I welcome you to the 107th running of the famous Powercor Melbourne to Warrnambool Road Race Classic 2023. This will be my fourth year as Race Director and together with KSJ Events and all the sponsors we are delighted to bring you a first class event. The race route will be identical to the 2022 edition.

Once again starting at Avalon and onto the freeway for approximately 26 km before the race turns off the freeway and heads inland to conquer some climbs and, pending weather conditions, there could be some windy sections on the circuit.

My favourite part of this race is when it comes out onto the Great Ocean Road and down to the last 60 kms where the race becomes not only interesting but also hard as the riders will have already ridden 200 kms, and with a few left and right turns coming towards the finish it makes for a very interesting finish with riders attacking all the way until they hit the famous Raglan Parade.

Once again we say thank you to Powercor Australia for their generosity in sponsoring this race along with all the other support sponsors. The Warrnambool Road Race Committee along with the Warrnambool City Council should be highly commended for putting the time and effort into making this one of the best races in Australia along with the support of the Victorian Police and of course the race organiser Karin Jones and all her race crew.

I would like to wish all the Competitors, Commissaires, motor marshals, crew and volunteers the best of luck and hope to have a safe race with a worthy winner.

Agostino Giramondo

Race Director

HONOUR ROLL – Last 15 Years

2022	Cameron Scott	NSW	6h 07m 41s
2021	Jensen Plowright	VIC	6h 04m 44s
2020	Brendan Johnson	ACT	6h 16m 03s
2019	Nicholas White	VIC	6h 15m 06s
2018	<i>Event not held</i>	-	-
2017	Nathan Elliott	VIC	6h 04m 23s
2016	Nathan Elliott	VIC	6h 38m 55s
2015	Scott Sunderland	WA	7h 27m 31s
2014	Oliver Kent-Spark	VIC	7h 00m 21s
2013	Samuel Horgan	NZL	6h 32m 02s
2012	Floris Goesinnen	NED	7h 00m 23s
2011	Joel Pearson	VIC	7h 24m 14s
2010	Rhys Pollack	VIC	7h 49m 40s
2009	Joel Pearson	VIC	6h 28m 25s
2008	Zac Dempster	VIC	7h 18m 15s



EVENT PARTNERS

MAJOR PARTNERS



Melbourne to Warrnambool
Naming Rights Partner



Women's Warrnambool Classic
Naming Rights Partner

TOURISM PARTNERS



EVENT PARTNERS



MEDIA PARTNERS



DELIVERY PARTNER



PART OF THE



SECTION 2 – EVENT DETAILS

RACE SCHEDULE

DATE	DISTANCE	START TIME	EXPECTED FINISH TIME	START LOCATION	FINISH LOCATION
Saturday 4 February 2023	269.7 km	8:00am	2:02pm (45 km/h) to 3:43pm (35 km/h)	Avalon Airport, Beach Rd, Lara (Start Line – Hornet Drive, Avalon)	Raglan Parade, Warrnambool

CONTACT LIST

RACE MANAGEMENT

Race Director	Agostino Giramondo	0438 308 130
President of the Commissaires Panel M2W	Wayne Pomario	0447 443 758
Official	Karen O'Callaghan	0430 541 641
Official	Alana Forster	
Official	Pam Williams	
Official	Neville Williams	
Official	Frank Ryan	
Official	Michelle Grima	
Official	Sam Phillips	
Official	Graham Bull	
Official	Laurie Noonan	
Official	John Grima	
Official	Matthew Wright	
Official	David Danson	
Official	Steve Nicol	
Tour Radio	Stephen Michetti	
Technical Director	Laurie Norris	
Chief Safety Marshal	Chris Greene	
Marshal Coordinator	Gary Leech	

EVENT MANAGEMENT

Event Director	Karin Jones	0408 375 238
Event Services	Emily Thompson	0448 505 106
Marketing & Media	Cozalive Ian Cohen	0405 141 146
	Megan Gammie	

Medical	Guarded Group
Timing and Results	Nathan Fraser
Broadcast	Editrix Ian Gates

COMMENTATOR Jethro Nagel
PHOTOGRAPHERS Con Chronis / Jean-Pierre Ronco
NEUTRAL SUPPORT SRAM

MEDIA & COMMUNICATIONS

All Media & Communications enquiries should be directed to:
Ian Cohen at ian@cozalive.com.au on 0405 141 146

WEBSITE

www.melbournetowarrnambool.com.au

SOCIAL MEDIA

Facebook @melbournetowarrnamboolcyclingclassic
Instagram @m2wcyclingclassic
Twitter @M2WCycling
Hashtags #M2W23 #NRS23

BROADCAST

The race will be broadcast on SBS On Demand and the SBS Cycling Central Facebook page from 11:30am to 3:00pm AEDT.

Highlights to be shown on SBS and available on SBS On Demand.



MEETINGS

NUMBER COLLECTION

Date Friday 3rd February
Time 5:00pm – 7:00pm
Location Quest Apartments Werribee Carpark, 69 Synnot St, Werribee

Date Saturday 4th February
Time 5:30am – 7:00am
Location Organisation Marquee, Start Venue, Avalon Airport

Teams and riders may collect their race numbers at either of the above times. Please ensure all riders have a proof of identity and proof of membership in case details need to be verified.

CONFIRMATION OF RIDERS (NRS TEAMS)

Date Friday 3rd February
Time 5:00pm – 6:30pm
Location Quest Apartments Werribee Carpark, 69 Synnot St, Werribee
Group NRS Registered Teams Only

NRS teams must confirm their starting riders during this time. Confirmation can be done in person while collecting numbers, by email (ndf@6-v.org) or via telephone (0404 622 272). Teams that do not confirm their starters **will not appear** on start lists or results.

TEAM MANAGERS MEETING

Date Friday 3rd February
Time 6:30pm
Online
<https://us04web.zoom.us/j/75707080047?pwd=Jk6TNsY3scPkbEEu3aUJbuzl5j213.1>
Group NRS Registered Teams Only

As per AusCycling National Road Series Regulations this meeting is compulsory for all Team Managers.

COMMISSAIRES & OFFICIALS MEETING

Date Friday 3rd February
Time 7:00pm
Online
<https://us04web.zoom.us/j/76853606502?pwd=8p3pgziWQhVOODp0xJoW3l7OyIxbKC.1>
Group Commissaires & Officials



DRIVERS & NAVIGATION STAFF BRIEFING

Date	Saturday 4 th February
Time	7:00am
Venue	Next to Registration, Start Venue, Avalon Airport
Group	All Convoy Drivers (except for Teams) & Navigation Staff

POLICE, MOTO MARSHAL & MARSHAL BRIEFING

Date	Saturday 4 th February
Time	7:15am
Venue	Bus Shelter area on Canberra Dve, Start Venue, Avalon Airport
Group	All Moto Pilots and Marshals with Victoria Police

Victoria Police shall ensure all moto pilots are fully briefed on the Convoy Code of Conduct. All persons riding a motorbike in the race are required to attend and hold a current AusCycling membership card.

RIDER BRIEFING

Date	Saturday 4 th February
Time	7:45am
Venue	Start Line

All riders will be called to the start line at 7:45am to receive a race briefing from the Race Director.

SECTION 3 – EVENT REGULATIONS

GENERAL REGULATIONS

Any infringement of any race rules and regulations by any competitor, team official or helper will make them liable to such penalties as set down in the AusCycling/UCI scale of penalties.

The Commissaires Panel will be managed by the President of the Commissaires Panel (PCP) who has been designated by AusCycling. The PCP will allocate the specific duties to the members of the Commissaire's panel, which may include but are not limited to, Principal Commissaires, Moto Commissaires, and Chief Judge.

EXTREME WEATHER

The race will be run without regard for the weather, with the exception of extreme weather conditions. In this case, the UCI's Extreme Weather Protocol and AusCycling's Heat Policy will be consulted, and a decision will be made between the Event Management Team, the PCP, and Emergency Services.

Participating riders should be educated about drinking hydrating liquids regularly in preparation before the race and throughout the race itself. All riders are required to carry sufficient hydration for the race. Riders should continue to drink liquids post-race to replace the fluids lost during the race. In the event of an unusually high heart rate, dizziness, headache, nausea, cramps, confusion or loss of energy and endurance, the rider should be advised to stop, dismount, sit in shade off the road, drink and wait for the medical support to assist.

It is the rider's sole responsibility to ensure that they use sunscreen and carry and drink plenty of water for the race.

For more information, please see the AusCycling Extreme Weather Policy [HERE](#).

RACE START & SIGN ON

The race will start promptly at the advertised times with count down times being announced at the start area from 30 minutes before the start of each stage. NRS Category riders only are required to sign on from 1 hour (7:00am) until 15 minutes (7:45am) before race start time. Sign on will be located at the start line and will be managed by the Chief Judge.

TEAM CONVOY VEHICLES (NRS CATEGORY ONLY)

Each NRS team is allowed one vehicle in the race convoy, which will be no higher than 1.70m. This vehicle may carry spare bikes, spare wheels, and any other spare parts needed to service riders during the race. Each vehicle must travel on the left-hand side of the road.

Convoy Vehicle Order

Convoy vehicle order will be determined by draw as per NRS regulations:

Draw 1: NRS and NRS registered UCI Teams

Draw 2: UCI teams not NRS registered

Draw 3 (if required): Wild Card and Composite Teams

Draw 4 (if required): Teams not represented at the Team Managers Meeting



RIDER SUPPORT PARKING

Designated Rider Support Parking areas will be provided at the start and finish of the race and are detailed in *Section 4 – Race Details*. These areas have been specifically planned with the approval of local councils to ensure minimal disruption to local residents and businesses. All vehicles must park in these designated areas. Any teams or riders found to be parking vehicles or setting up infrastructure outside of these areas will be asked to relocate to the designated area. Please note that local council have the ability to fine any teams or riders who do not follow local regulations and teams, or riders may be penalised at the discretion of the race commissaires and event organisers.

Vehicles are permitted to be left at the start area for the day or overnight at Avalon Airport, however, must be parked outside the gates of the start area – NO vehicles to be left inside the start area.

RIDER SUPPORT VEHICLES (NON-CONVOY)

Non-convoy vehicles will be required to leave before the race start or they will be held for 5 minutes after the race start. These vehicles are not permitted to follow the race convoy. Please see *Appendices* for routes that will allow all non-convoy vehicles to access Feed Zones and the race finish ahead of the race and avoid being stuck behind the race convoy. These routes have been developed in conjunction with Victoria Police to relieve local traffic congestion and to allow the safest and quickest route possible so must be used where possible.

TRAFFIC REGULATIONS

All traffic regulations must be strictly observed by both riders and drivers of official vehicles; any infringements will incur penalties. The Commissaire's Panel has the right to fine and/or disqualify for any infringement of traffic regulations.

Every assistance will be given by Police and Traffic Controllers to ensure the smooth passage of the race; however, riders must remember that they are competing on public roads, and in the interest of safety, must obey any instructions given by Race Staff and Officials, Traffic Controllers or Police.

TECHNICAL REGULATIONS

1. ORGANISATION

The Powercor Melbourne to Warrnambool Cycling Classic is organised by KSJ Events, under the regulations of AusCycling and the Union Cycliste Internationale (UCI). The race is to be held on Saturday 4th February 2023.

2. TYPE OF EVENT

The race forms part of the AusCycling National Road Series, the feature series on the Australian road-racing calendar, with teams and individuals competing for national recognition. The series is conducted under the direction of the AusCycling Road Commission with the aim of improving the standard of domestic competition and creating a stepping-stone for riders looking to compete overseas.

A, B & C Grade Categories will also be included in the race.

The event will be conducted under the rules and regulations of AusCycling and the UCI. For more information, please refer to the AusCycling website (www.auscycling.org.au) and UCI website (www.uci.org).

3. PARTICIPATION

The following membership categories are eligible to participate:
U21 Men, Elite Men, Masters Men, Elite Women.

Please note that only full AusCycling membership card holders are eligible to enter this race. Temporary memberships are not valid.

The race consists of four categories:

1. NRS Men
2. A Grade
3. B Grade
4. C Grade

The NRS category is open to the following, in order of priority:

1. UCI Continental Teams
2. AusCycling NRS Registered Teams
3. State Institute Teams
4. International Teams (maximum of 3 / registered with their National Federation only)
5. Domestic Wild Card Teams (maximum of 2 / registered within Victoria only)
6. Individual entries (composite teams may be formed from individual entries at the discretion of KSJ Events)

The number of riders per each team is minimum 4 – maximum 8.



4. GRIDDING

It is very important that riders assume their correct position on the start line.

The following order will apply:

1. NRS
2. A Grade
3. B Grade
4. C Grade

Please refer to overhead signage in the start chute. Checks will take place to ensure riders have assumed the correct position at the start.

5. RACE COMMUNICATIONS / RADIO-TOUR

Radio communication links the vehicles in the convoy and is a critical element of a safe, well-run event.

KSJ Events will provide each NRS team with one handheld radio for use in their convoy vehicle. Radio distribution will occur at the Radio distribution marquee next to registration at Avalon Start venue.

Radio-Tour traffic is directed by the PCP during racing.

Team cars cannot communicate with the Commissaires or the Radio-Tour operator; all team radios are programmed to receive the radio tour channel only (not transmit).

It is the team's responsibility to ensure their radio is turned off and returned to the Information marquee next to the presentation stage within the Finish Venue at the completion of the race. Teams will be invoiced for any lost or damaged equipment.

Unfortunately the race does travel through areas with little or no mobile or radio coverage, the event organisation has worked tirelessly with radio provider to provide the best possible communication. We ask for your patience during the times of minimal communication.

6. SRAM NEUTRAL RACE SUPPORT

SRAM Neutral Race Support will provide neutral race support for the duration of the race for riders in all categories. SRAM neutral wheels will only be provided for the NRS category however, and all graded categories will be wheels in wheels out policy.

There will be three vehicles used to provide this service. These vehicles will be clearly marked and located near the teams parking area close to the start line.



SRAM neutral wheels supplied for the NRS category will be both Rim Brake wheels and Disc Brake wheels (100X12 Front 160mm Rotors and 142X12 Rear 140mm Rotors) – Zipp Firecrest wide carbon rims and Zipp Alloy Rim narrow braking track size wheels – 11 and 12 speed.

Any wheels provided by SRAM must be returned immediately following the conclusion of the race.

All servicing must be from a stationary position on the left-hand side of the road as per article 2.3.030 of the UCI regulations.

7. SUPPORT VEHICLES

It is important to remember that support vehicles for graded categories will not be allowed to follow the race convoy. This will be managed by Victoria Police. It is therefore encouraged that all graded category riders plan accordingly to make use of this neutral race support service. It is strongly recommended however that all graded category riders also carry a pump and spare tube should they fall behind a neutral race support vehicle and the next one is some distance away.

Best endeavours will be made to service riders as quickly as possible. SRAM Neutral Race Support will not be responsible for any loss of time due to riders having to wait for support to continue.

8. CLASSIFICATIONS

The following classifications will be awarded:

Powercor Melbourne to Warrnambool Cycling Classic Race Winner



The Race Winner will be the first rider to cross the finish line.

The Race Winner and second and third placegetters will be required for the presentation ceremony following the race finish.

Support Categories: A, B & C Grade Race Winners

**No jerseys awarded*

The A, B & C Grade winners will be the first rider in each grade to cross the finish line.

The winner only for each category will be required for the presentation ceremony following the race finish.

3YB / Coast FM Victorian 200km Championship



The Victorian 200km Championship winner will be the first rider to cross the Sprint Point line at Sprint #3 – Great Ocean Rd, Peterborough at 203.8 kilometres. (Please note the 200-kilometre distance is taken from the *Neutral Zone End – Race Start*, at 3.8 km from the *Start Line*).

The winner of the Victorian 200km Championship will be required for the presentation ceremony following the race finish.

Deakin University Sprint Champion Classification



The Sprint Champion Classification will be awarded to the rider with the highest aggregate number of points accumulated from the four intermediate sprints throughout the race.

All categories are eligible for the Sprint Champion Classification, however only one overall winner and one prize will be awarded across the entire field (i.e., not across each individual grade).

It is a requirement that the rider finishes the race in the required time to be eligible for the Sprint Champion Classification.

Points will be awarded for intermediate sprints as follows:

Sprint Champion Classification - Points Allocation			
	1 st	2 nd	3 rd
All Intermediate Sprints	3	2	1

Details of intermediate sprints can be found in *Section 4 – Race Details*.

The winner of the Sprint Champion Classification will be required for the presentation ceremony following the race finish.

SRAM King of the Mountain Classification

The King of the Mountain (KOM) Classification will be awarded to the rider with the highest aggregate number of points accumulated from the four hill climbs throughout the race.



All categories are eligible for KOM Classification, however only one overall winner and one prize will be awarded across the entire field (i.e., not across each individual grade).

It is a requirement that the rider finishes the race in the required time to be eligible for the KOM Classification.

Points will be awarded for hill climbs as follows:

KOM Classification - Points Allocation			
	1 st	2 nd	3 rd
All Hill Climbs	3	2	1

Details of hill climbs can be found in *Section 4 – Race Details*.

The winner of the KOM Classification will be required for the presentation ceremony following the race finish.

In the event of a tie on the sprint or mountain classification, finish placings shall determine the result.

Anchor Point First Warrnambool Rider Classification



The First Warrnambool Rider Classification will be awarded to the first rider to cross the finish line who is a member of the Warrnambool Cycling Club.

The winner of the First Warrnambool Rider Classification will be required for the presentation ceremony following the race finish.

Avalon Airport Young Rider Classification



The Young Rider Classification will be awarded to the highest placed rider born in 2003 or later.

The winner of the Young Rider Classification will be required for the presentation ceremony following the race finish.

Best Team Classification

**No jersey awarded*

The Best Team Classification will be awarded to the team with the fastest race time based on the sum of the three best individual race times within the team.

In the event of a draw, the teams shall be separated by the sum of the placings acquired by their three best individual race times for the race.

If there is still a draw, the teams shall be separated by the placing of their best rider in the race finish. Any team reduced to fewer than three riders shall be eliminated from the Best Team Classification.

The winners of the Best Team Classification will be required for the presentation ceremony following the race finish.

All Finishers - Medals

Time Medallions are awarded to all cyclists whose finishing time is within the Time Medallion Cut Off. The time Medallion Cut off is a finishing time within 15% of the winner's time or 1 hour, whichever is greater.

9. PRIZEMONEY

The following prizemoney will be awarded:

CATEGORY	PLACE			TOTAL
	1 st	2 nd	3 rd	
NRS Men	\$1000	\$500	\$250	\$1,750
A Grade Men	\$200	\$100	\$50	\$350
B Grade Men	\$200	\$100	\$50	\$350
C Grade Men	\$200	\$100	\$50	\$350
Sprint Champion Classification	\$200	-	-	\$200
King of the Mountain Classification	\$200	-	-	\$200
First Warrnambool Rider Classification	\$200	-	-	\$200
Young Rider Classification	\$200	-	-	\$200
NRS Team Classification	\$500	-	-	\$500
Total	\$2,900	\$800	\$400	\$4,100

Prizemoney will be paid to Team Managers within 21 days post-race. An email will be sent to team managers and Individual riders who have won prizemoney which will request bank details for payments to be made.

10. ANTI-DOPING

Testing may be conducted at this event, and it is the responsibility of each rider to ensure they are not required for testing prior to their departure. If in operation, doping control facilities or details of the location will be located close to the finish line. Please see an organisation official or staff member for assistance.



11. PRESENTATIONS

A presentation ceremony will take place within 15 minutes of all category winners crossing the finish line. Riders are to present themselves to the event staff located at the marquee adjoining the presentation stage immediately after finishing.

The following riders must attend this presentation ceremony:

- NRS Category Race Winner and Second and Third Placegetters
- Support Categories: A, B & C Grade Race Winners
- Victorian 200km Championship Winner
- Sprint Points Classification Winner
- King of the Mountain Classification Winner
- First Warrnambool Rider Winner
- Young Rider Winner
- NRS Leader – both Open and U21
- Best Team Classification Winner (overall best for the event)

If a rider fails to present themselves for the presentation ceremony they will be penalised as per regulations.

12. PENALTIES

The NRS/AusCycling/UCI Scale of Penalties will apply. For more information, please refer to the AusCycling website (www.auscycling.org.au) and UCI website (www.uci.org). Penalties have recently changed and been updated – please take the time to understand these updates.

13. NEUTRAL RACE CONTROL

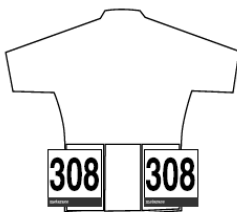
The first 3.8 kilometres of the race will operate under a neutral race control to ensure a safe start. Please note that this 3.8 kilometres is included in the total distance of the race – Neutral Zone Finish (Race Start) will be at 3.8 km rather than 0.0 km. Please refer to the Course Mocka in *Section 4 – Race Details* for more information.

14. RACE NUMBERS & TRANSPONDERS / TIMING & RESULTS

Riders will be issued two body numbers, a frame plate and an electronic transponder at registration. Riders must fit them as shown below. Numbers must not be cut, folded or modified in any way.

For 2023, clear number pockets, or ‘pinless systems’ are not permitted in Road Races. Numbers must be placed on the outer layer of clothing.

Body Number



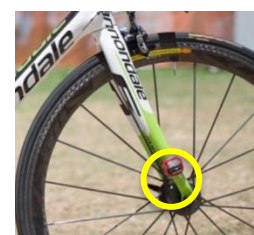
Left & Right Pockets on the outer layer of clothing, with one hand width between

Frame Plate



Brake Bridge or Base of Seat Post

Transponder



Low on Front Fork

Transponders must be returned to the Information marquee next to the presentation stage within the Finish Venue at the completion of the race. Any teams/riders failing to return their transponder will incur a \$40 administration fee, and any lost or damaged transponders will result in a replacement fee of \$130.

Any transponder not returned at the conclusion of the event must be returned the following address within 5 business days:

AusCycling, Steven Nicol, 281 Darebin Rd, Thornbury VIC 3071

Results and start lists will be available at:

6-v.org/m2w

15. MEMBERSHIP HOLDERS

No competitor will be allowed to start without a current, 2023 AusCycling membership or UCI licence. Proof of identity and membership may be required for number collection. Further, all official race personnel (i.e., managers, team staff and officials) driving or present in the race convoy must be a member of AusCycling or their National Federation.

16. MEDICAL SERVICES

A Race Doctor, Paramedic crew, and two First Responder crews will provide medical services for the race. The Race Doctor will be present in the Race Doctor Vehicle within the race convoy whilst the Paramedic crew and First Responder crews will be traveling in Guarded Medical Group vehicles.

Medical staff can be reached over the event radio system in the case of an incident.

Medical vehicles will only render medical assistance while stationary.

17. HOSPITALS

**University Hospital Geelong
(Barwon Health)**

Ryrie St (Emergency Entrance), Geelong
(03) 4215 0000

**Warrnambool Base Hospital
(South West Healthcare)**

Ryot St, Warrnambool
(03) 5563 1666

18. RACE ENVELOPE, ROLLING ROAD CLOSURES & CUT OFF TIME LIMITS

The race and road closures are permitted by VicRoads, Victoria Police, and local councils. Please follow all directions of Police and Traffic Controllers.

A rolling road closure will be implemented by Victoria Police for the safe passage of the race. A maximum time of 10 minutes behind the main peloton will be permitted before riders will be classed as outside of the race envelope and rolling road closure. **NO EXCEPTIONS.**

If a rider is passed by the Police tail vehicle (a Victoria Police Highway Patrol four-wheel drive vehicle), this indicates that this rider is outside of the race envelope and rolling road closure, and as a result, **MUST** obey the standard road rules of Victoria.

Victoria Police, along with commissaires, will monitor and issue infringements to riders not obeying Victorian road rules when outside of the race envelope and rolling road closure.



Event organisers and Victoria Police work closely to develop a safe strategy to deliver the Melbourne to Warrnambool Cycling Classic. It is critical that riders and team managers obey instruction from Victoria Police, the Race Director and Officials.

In an instance where a breakaway occurs and the race envelope stretches to beyond 10 minutes, Victoria Police will apply the following ruling:

- If the majority of riders are in the breakaway group, the Police tail vehicle will begin passing riders, therefore placing riders outside of the race envelope and rolling road closure.
- If the majority of riders are in the main peloton, Victoria Police will instruct through the Race Director for the peloton to increase the pace of the race and shorten the breakaway gap.

Riders and team managers need to ensure instructions from the Race Director are followed. The event permissions and Victoria Police resourcing allow for a road closure envelope of 10 minutes only.

Victoria Police have the power and have indicated that the race will be abandoned if riders fail to obey instructions when it comes to managing the race envelope.

19. CONVOY ETIQUETTE

Team vehicles shall carry a team manager who holds the appropriate membership, who shall be responsible for the vehicle and all its occupants.

Convoy vehicles shall travel on the left-hand side of the road and shall take up position behind the car of the PCP or of the Commissaire delegated by them.

Permission is required to pass a Commissaire vehicle travelling behind any riders. Any driver wishing to overtake a Commissaire's vehicle on their own initiative shall move through the convoy on the right of the road, draw level with that vehicle, state their intention and proceed only once granted official permission by the Commissaire. The driver shall then complete their business as quickly as possible and return without delay to their designated place in the convoy.

Occupants of all vehicles (including motorcycles) shall, in all circumstances, comply with the instructions given by the Commissaires, who shall, in turn, do their utmost to facilitate the manoeuvres of the vehicles.

If a group of riders breaks away from the bunch, their follower vehicles may not slip in between the break-away riders and the following group without the authorisation of the Commissaire, if and for as long as they consider the gap sufficient.

No vehicle may overtake the riders in the last 10 kilometres of the race, or within 1km of an intermediate sprint or hill climb.

20. FEEDING

3 designated Feed Zones are included for the race, and their placements are indicated in *Section 4 – Race Details*. Feeding is ONLY permitted from the left side of the road (race direction) and penalties will be imposed on those who choose to ignore this.

Feeding from vehicles is permitted only for the NRS category (NRS team and individual riders) and only when safe to do so and with permission from the PCP. Feeding from vehicles is prohibited on climbs, descents and during the first 30 kilometres and last 20 kilometres of the race. Changes may be made to these distances due to extreme weather conditions at the discretion of the PCP.

Feeding from vehicles shall occur exclusively behind the Commissaire's car, and under no circumstances inside or directly behind the bunch. Only when there is a breakaway group, the Commissaire following the group will deem whether the situation is safe, and the group is small enough to allow vehicles to feed riders alongside the bunch. Once the rider/s have been fed by the vehicle, the vehicle must immediately return to their respective designated position in the convoy.

All official vehicles including all commissaire, neutral support, medical and sag wagon vehicles will carry neutral water. Official vehicles will only be used for providing neutral water when team cars are unable to.

Graded category riders will only be permitted to feed at the designated Feed Zones.

****NOTE:** *There will be a Contingency Feed Zone at 236.5 kilometres (previously Feed Zone #4) which will be used only in the event of extreme weather conditions. A decision will be made on Friday as to whether this Feed Zone will be used and communicated to teams and riders.*

21. LITTERING

A designated Litter Zone will be located 200 metres before and after each Feed Zone.

Riders must not discard bidons or litter of any kind in any other areas of the course. Riders must take responsibility for their own litter and retain it until the Litter Zones or return it to their team vehicles.

Riders found to be littering will be fined in accordance with local laws and AusCycling/UCI regulations.

22. TOILET BEHAVIOUR

Riders are advised that it is an offence to urinate in public. Penalties will be imposed on those who choose to ignore this law.

Toilets will be provided at the start venue, and temporary toilets will be provided in the finish venue in Warrnambool – riders are asked to not use local businesses facilities.

SECTION 4 – RACE DETAILS

KEY DETAILS

DATE	Saturday 4 th February 2023
START TIME	8:00am
DISTANCE	269.7 km
TOTAL ELEVATION	1,901 m
START LOCATION	Hornet Drive, Avalon Airport, Lara
SIGN ON	7:00am – 7:45am
CONVOY ASSEMBLY TIME	7:45am
CONVOY ASSEMBLY LOCATION	Adjacent to Start Line, see map below

NEUTRAL ZONE 3.8 km (*Please note that this 3.8 kilometres is included in the total distance of the race – Neutral Zone Finish [Race Start] will be at 3.8 km rather than 0.0 km*)

SPRINT #1	90.1 km – Main St, Birregurra
SPRINT #2	109.5 km – Forest St, Colac
SPRINT #3	203.8 km – Great Ocean Rd, Peterborough
SPRINT #4	252.8 km – Great Ocean Rd, Allansford

HILL CLIMB #1	36.3 km – Barrabool Rd, Barrabool
HILL CLIMB #2	120.8 km – Irrewillipe Rd, Elliminyt
HILL CLIMB #3	177.9 km – Barrett St, Timboon
HILL CLIMB #4	196.7 km – Great Ocean Rd, Port Campbell

FEED ZONE #1	54.5 km – Cape Otway Rd, Modewarre
FEED ZONE #2	132.6 km – Irrewillipe Rd, Irrewillipe
FEED ZONE #3	197.8 km – Great Ocean Rd, Port Campbell
CONTINGENCY FEED ZONE	236.5 km – Henrys Sawmill Rd, Nullawarre

FINISH LOCATION	Raglan Parade, Warrnambool (200m past Banyan St)
EXPECTED FINISH TIME	2:00pm – 3:45pm
CONVOY DEVIATION	Right Turn onto Banyan St 200m prior to Finish Line

GENERAL INFORMATION

- START RIDER SUPPORT PARKING Adjacent to Start Line, see map below
- START TOILETS Toilets located within Start Venue
- START COFFEE Coffee Vendor located within Start Venue

****NOTE:** Any vehicles to be left for the day or overnight at Avalon Airport must be parked outside the gates of the start area – NO vehicles to be left inside the start area.

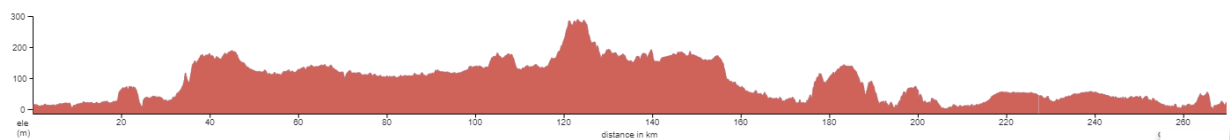
- FINISH RIDER SUPPORT PARKING Carpark off Darling St
- FINISH TOILETS Portable Toilets located within Finish Venue

COURSE MAP



Ride With GPS link [HERE](#)

COURSE PROFILE



COURSE MOCKA

KM	To Go	ACTION	DETAIL	COMMENTS	45 km/h	40 km/h	35 km/h
Neutral Zone (3.8km)	Neutral Zone (3.8km)		START Hornet Dr - Avalon Airport	At Hangar	8:00	8:00	8:00
		LEFT	Unnamed Road		Neutral (3.8km @ 30km/h)	Neutral (3.8km @ 30km/h)	Neutral (3.8km @ 30km/h)
			<i>Speed Humps x 3</i>	Speed Humps - Caution			
		RIGHT	Canberra Dr	Give Way Sign			
		LEFT	Unnamed Road	Roundabout - Keep Left (1st Exit) <i>To Terminal</i>			
			<i>Speed Hump</i>	Speed Hump - Caution			
		RIGHT	To continue on Unnamed Road	Narrow Road - Caution (for 200m) <i>To Terminal</i>			
			<i>Speed Hump</i>	Speed Hump - Caution			
		LEFT	To continue on Unnamed Road	<i>To Terminal</i>			
			<i>Speed Hump</i>	Speed Hump - Caution			
		Veer LEFT	To continue on Unnamed Road	Boom Gate Pass Taxi Rank on Left <i>To Terminal</i>			
			<i>Speed Hump</i>	Speed Hump - Caution			
			<i>Narrow Road</i>	Narrow Road - Caution (for 600m)			
			<i>Speed Humps x 6</i>	Speed Humps - Caution (for 700m)			
			LEFT	Beach Rd			
	Veer LEFT	Princes Fwy (M1) Entry Ramp	Narrow Road - Caution (for 400m) <i>To Geelong / Great Ocean Road</i>				
	Merge RIGHT	Princes Fwy (M1)					
3.8	265.9		NEUTRAL ZONE FINISH (RACE START) Princes Hwy (M1), Avalon	At second 100 km/h Sign at end of Merge Lane	8:07	8:07	8:07
10.4	259.3	Keep RIGHT	To continue on Princes Fwy (M1)	<i>To Colac / Great Ocean Rd</i>	8:16	8:17	8:18
25.5	244.2	Veer LEFT	Hamilton Hwy (B140) Exit Ramp	<i>To Hamilton / Newtown</i>	8:36	8:40	8:44
26.1	243.6	RIGHT	Hamilton Hwy (B140)	Traffic Island - Keep Right Traffic Lights <i>To Hamilton</i>	8:37	8:41	8:45
26.1	243.6		<i>Centre Median Strip</i>	Centre Median Strip - Keep Left / Caution	8:37	8:41	8:45
26.2	243.5	Cross	Princes Fwy (M1) Exit Ramp / Entry Ramp	Centre Median Strip - Keep Left / Caution Traffic Lights	8:37	8:41	8:46

26.4	243.3	Cross	Unnamed Road / McCanns La	Centre Median Strip - Keep Left / Caution	8:37	8:41	8:46
29.0	240.7	LEFT	Merrawarp Rd (C111)	<i>To Ceres</i>	8:41	8:45	8:50
33.7	236.0	RIGHT	Barrabool Rd (C111)	Stop Sign <i>To Moriac</i>	8:47	8:52	8:58
35.1	234.6		HILL CLIMB #1 START Barrabool Rd, Barrabool	At Ballancea Rd	8:49	8:54	9:01
36.3	233.4		HILL CLIMB #1 FINISH Barrabool Rd, Barrabool	Just after Devon Rd	8:50	8:56	9:03
43.3	226.4	Veer LEFT	To continue on Barrabool Rd		9:00	9:06	9:15
48.7	221.0		<i>Traffic Island</i>	Traffic Island - Keep Left Narrow - Caution	9:07	9:14	9:24
48.8	220.9	STRAIGHT	Barrabool Rd becomes Considines Rd	Traffic Islands - Keep Left Narrow - Caution Give Way Sign	9:07	9:15	9:24
50.8	218.9		<i>Railway Crossing</i>	Railway Crossing - Caution	9:10	9:18	9:28
52.6	217.1	LEFT	Hortips Rd	Narrow Road - Caution (for 1.1km)	9:12	9:20	9:31
53.8	215.9	RIGHT	Cape Otway Rd	Give Way Sign	9:14	9:22	9:33
54.4	215.3		LITTER ZONE #1 START Cape Otway Rd, Modewarre		9:15	9:23	9:34
54.5	215.2		FEED ZONE #1 START Cape Otway Rd, Modewarre	At Modewarre Recreation Reserve	9:15	9:23	9:34
54.7	215.0		FEED ZONE #1 FINISH Cape Otway Rd, Modewarre		9:15	9:23	9:34
54.9	214.8		LITTER ZONE #1 FINISH Cape Otway Rd, Modewarre		9:15	9:24	9:35
71.6	198.1	STRAIGHT	To continue on Cape Otway Rd	Traffic Islands - Split (Caution) Stop Sign <i>To Apollo Bay [77] / Colac via Birregurra</i>	9:38	9:49	10:03
87.7	182.0	RIGHT	Birregurra-Deans Marsh Rd (C152)	Traffic Island - Caution Stop Sign <i>To Birregurra / Colac</i>	9:59	10:13	10:31
89.5	180.2	Continue	Birregurra-Deans Marsh Rd becomes Main St (C152)		10:01	10:16	10:34
90.1	179.6		SPRINT #1 Main St, Birregurra	At Royal Mail Hotel	10:02	10:17	10:35
90.4	179.3	Continue	Main St becomes Warncourt-Birregurra Rd (C152)		10:03	10:17	10:36
96.4	173.3		<i>Traffic Island</i>	Traffic Island - Keep Left Narrow - Caution	10:11	10:26	10:46

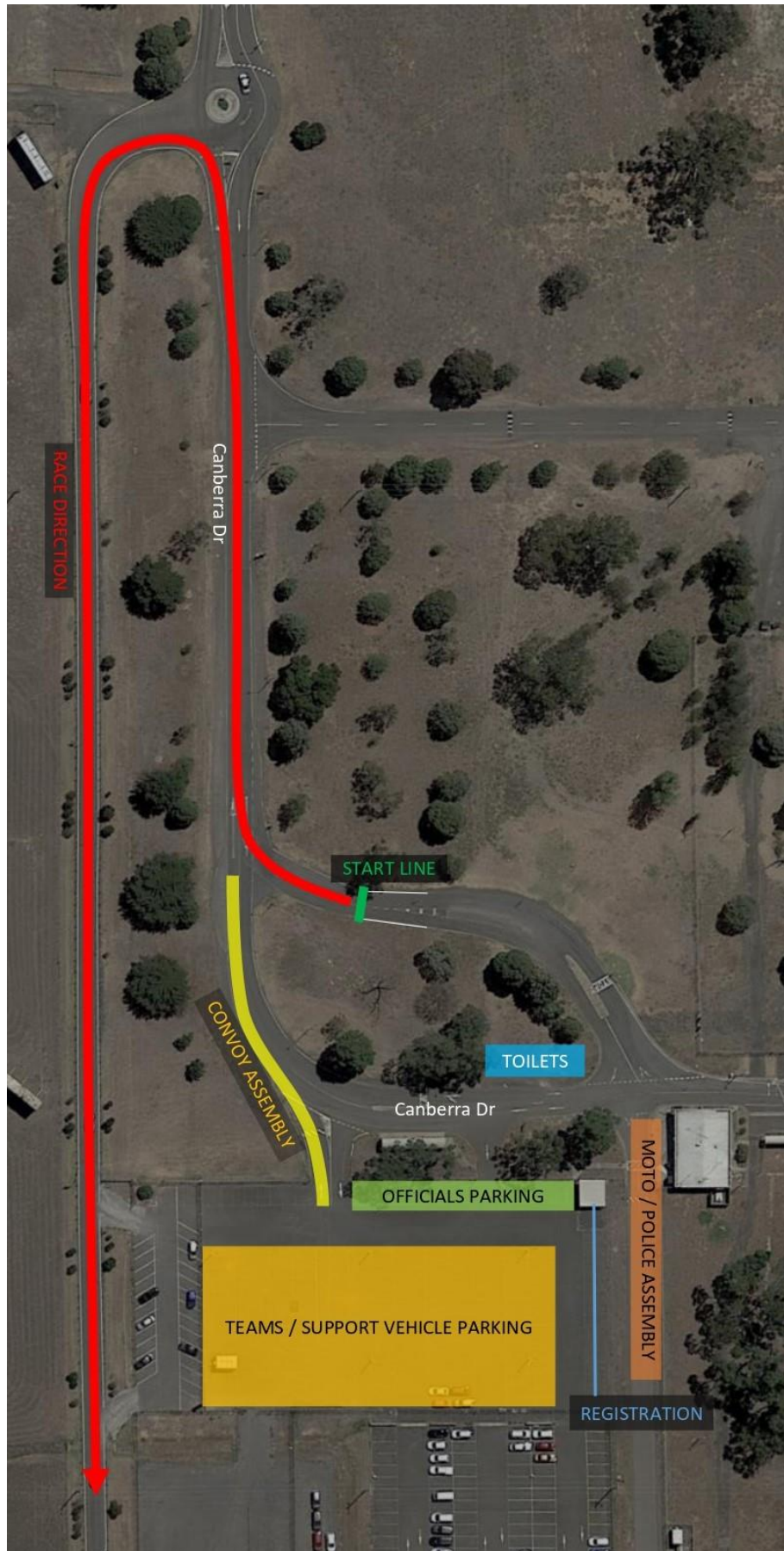
96.5	173.2	LEFT	Princes Hwy (M1)	Traffic Island - Keep Left Narrow - Caution To Colac	10:11	10:26	10:46
102.8	166.9	LEFT	Collins Rd	Traffic Island - Caution	10:19	10:36	10:57
106.0	163.7	RIGHT	Colac-Forrest Rd (C154)	Give Way Sign	10:23	10:40	11:02
109.2	160.5	LEFT	Forest St	Traffic Island - Caution	10:28	10:45	11:08
109.5	160.2		SPRINT #2 Forest St, Colac	At Powercor Australia Office/Depot	10:28	10:46	11:08
111.3	158.4	RIGHT	Aireys St	Traffic Island - Caution	10:30	10:48	11:11
112.4	157.3	STRAIGHT	To continue on Aireys St	Traffic Islands - Split (Caution) Stop Sign	10:32	10:50	11:13
113.0	156.7	LEFT	Main St (C155)	No Sign Stop Sign	10:33	10:51	11:14
113.3	156.4	RIGHT	Irrewillipe Rd (C161)	No Sign <i>To Carlisle River</i>	10:33	10:51	11:15
117.5	152.2	Pass on Right	Underwoods Rd Slip Lane	Traffic Island - Keep Left (Caution)	10:39	10:58	11:22
117.5	152.2	Continue	Irrewillipe Rd (C161) becomes Irrewillipe Rd		10:39	10:58	11:22
117.9	151.8		HILL CLIMB #2 START Irrewillipe Rd, Elliminyt		10:39	10:58	11:23
120.8	148.9		HILL CLIMB #2 FINISH Irrewillipe Rd, Elliminyt	At Grimshaws Rd / Knights Rd	10:43	11:03	11:28
128.6	141.1	STRAIGHT	To continue on Irrewillipe Rd	Give Way Sign	10:54	11:14	11:41
132.4	137.3		LITTER ZONE #2 START Irrewillipe Rd, Irrewillipe		10:59	11:20	11:48
132.5	137.2	Continue	Irrewillipe Rd becomes Irrewillipe Rd (C163)		10:59	11:20	11:48
132.6	137.1		FEED ZONE #2 START Irrewillipe Rd, Irrewillipe	At Irrewillipe Recreation Reserve	10:59	11:20	11:48
132.8	136.9		FEED ZONE #2 FINISH Irrewillipe Rd, Irrewillipe		10:59	11:21	11:48
133.0	136.7		LITTER ZONE #2 FINISH Irrewillipe Rd, Irrewillipe		10:59	11:21	11:49
135.1	134.6	Continue	Irrewillipe Rd becomes New Irrewillipe Rd (C163)		11:02	11:24	11:52
147.7	122.0	Continue	New Irrewillipe Rd becomes Timboon- Colac Rd (C163)		11:19	11:43	12:14

157.2	112.5	LEFT	Lavers Hill-Cobden Rd (C156)	Fast Blind Corner - Caution Give Way Sign <i>To Timboon (C163) / Simpson / Lavers Hill</i>	11:32	11:57	12:30
157.3	112.4	RIGHT	Timboon-Colac Rd (C163)	<i>To Timboon</i>	11:32	11:57	12:30
170.9	98.8		<i>Traffic Island</i>	Traffic Island - Caution	11:50	12:18	12:54
170.9	98.8	LEFT	Cobden-Port Campbell Rd (C164)	Give Way Sign <i>To Timboon (C163) / Port Campbell</i>	11:50	12:18	12:54
171.4	98.3	RIGHT	Timboon-Colac Rd (C163)	<i>To Timboon</i>	11:51	12:19	12:54
175.9	93.8		HILL CLIMB #3 START Timboon-Colac Rd, Timboon		11:57	12:25	13:02
177.9	91.8	Continue	Timboon-Colac Rd becomes Barrett St (C163)		11:59	12:28	13:06
177.9	91.8		HILL CLIMB #3 FINISH Barrett St, Timboon	Just after Morgan St / Digneys Bridge Rd	11:59	12:28	13:06
178.8	90.9	Pass on Right	Bailey St Slip Lane	Traffic Island - Keep Left (Caution)	12:00	12:30	13:07
178.9	90.8	STRAIGHT	Barrett St becomes Main St (C162)		12:01	12:30	13:07
179.0	90.7		<i>Traffic Island</i>	Traffic Island - Split (Caution)	12:01	12:30	13:07
179.1	90.6	Continue	Main St becomes Timboon-Port Campbell Rd (C162)		12:01	12:30	13:08
186.9	82.8	RIGHT	Cobden-Port Campbell Rd (C164)	Give Way Sign <i>To Port Campbell</i>	12:11	12:42	13:21
195.0	74.7	RIGHT	Great Ocean Rd (B100)	Traffic Island - Caution No Sign <i>To Peterborough / Warrnambool</i>	12:22	12:54	13:35
195.2	74.5		HILL CLIMB #4 START Great Ocean Rd, Port Campbell		12:22	12:54	13:35
196.7	73.0		HILL CLIMB #4 FINISH Great Ocean Rd, Port Campbell	Just after Property #268	12:24	12:56	13:38
197.7	72.0		LITTER ZONE #3 START Great Ocean Rd, Port Campbell		12:26	12:58	13:40
197.8	71.9		FEED ZONE #3 START Great Ocean Rd, Port Campbell	Port Campbell Rifle Club	12:26	12:58	13:40
198.0	71.7		FEED ZONE #3 FINISH Great Ocean Rd, Port Campbell		12:26	12:58	13:40
198.2	71.5		LITTER ZONE #3 FINISH Great Ocean Rd, Port Campbell		12:26	12:59	13:40

203.8	65.9		SPRINT #3 (200 KM CHAMPIONSHIP) Great Ocean Rd, Peterborough	200 km from Neutral Zone Finish (Race Start)	12:34	13:07	13:50
206.5	63.2	Continue	Great Ocean Rd becomes Hamilton St (B100)		12:37	13:11	13:55
207.1	62.6	Continue	Hamilton St becomes Great Ocean Rd (B100)		12:38	13:12	13:56
214.8	54.9	LEFT	To continue on Great Ocean Rd (B100)	Stop Sign <i>To Warrnambool / Portland</i>	12:48	13:24	14:09
227.2	42.5	LEFT	Childers Cove Rd	Traffic Island - Caution	13:05	13:42	14:30
228.8	40.9	Cross	Haskeths Rd	Narrow Road - Caution (for 2.3km)	13:07	13:45	14:33
230.5	39.2	Continue	Childers Cove Rd becomes Rollos Rd		13:09	13:47	14:36
231.1	38.6	RIGHT	To continue on Rollos Rd	Very Narrow Road - Caution (for 2.5km)	13:10	13:48	14:37
233.6	36.1	RIGHT	Henrys Sawmill Rd		13:14	13:52	14:41
236.3	33.4		LITTER ZONE #4 START Henrys Sawmill Rd, Nullawarre		13:17	13:56	14:46
236.5	33.2		FEED ZONE #4 START Henrys Sawmill Rd, Nullawarre	Contingency Feed Zone Only Just before Public Toilets	13:17	13:56	14:46
236.7	33.0		FEED ZONE #4 FINISH Henrys Sawmill Rd, Nullawarre	Contingency Feed Zone Only	13:18	13:56	14:46
236.8	32.9		LITTER ZONE #4 FINISH Henrys Sawmill Rd, Nullawarre		13:18	13:57	14:47
236.8	32.9	LEFT	Great Ocean Rd (B100)	Give Way Sign	13:18	13:57	14:47
252.8	16.9		SPRINT #4 Great Ocean Rd, Allansford	At Allansford Cheese World	13:39	14:21	15:14
252.9	16.8		<i>Traffic Island</i>	Traffic Island - Split (Caution)	13:39	14:21	15:14
253.0	16.7		<i>Traffic Island</i>	Traffic Island - Split (Caution)	13:39	14:21	15:14
253.6	16.1	LEFT	Ziegler Parade	Traffic Island - Caution <i>To Allansford</i>	13:40	14:22	15:15
255.2	14.5		<i>Railway Crossing</i>	Railway Crossing - Caution	13:42	14:24	15:18
255.5	14.2	STRAIGHT	To continue on Ziegler Parade	Roundabout - Split (2nd Exit) (Caution)	13:43	14:25	15:19
256.2	13.5		<i>Traffic Island</i>	Traffic Island - Split (Caution)	13:44	14:26	15:20
256.6	13.1	LEFT	Tooram Rd	<i>To Scenic Tourist Route / Logans Beach Whale Nursery</i>	13:44	14:26	15:20
257.0	12.7		<i>Railway Crossing</i>	Railway Crossing - Caution	13:45	14:27	15:21
259.8	9.9	RIGHT	Hopkins Point Rd	<i>To Scenic Tourist Route / Logans Beach Whale Nursery</i>	13:48	14:31	15:26
266.8	2.9	Continue	Hopkins Point Rd becomes Marfell Rd		13:58	14:42	15:38

267.0	2.7	RIGHT	Hopkins Rd	Traffic Island - Caution Give Way Sign	13:58	14:42	15:38
267.4	2.3	LEFT	Otway Rd	Traffic Island - Caution Give Way Sign	13:59	14:43	15:39
267.9	1.8	Continue	Otway Rd becomes Flaxman St		13:59	14:43	15:40
268.5	1.2	LEFT	Raglan Parade (Princes Hwy) (A1)	Traffic Island - Caution No Sign Give Way Sign	14:00	14:44	15:41
269.5	0.2	Cross	Banyan St / Median Strip Cut Through (To Banyan St)	Convoy Deviation - Turn Right Traffic Lights <i>To Mortlake (B120) (Right)</i>	14:01	14:46	15:43
269.7	0.0		FINISH Raglan Parade (Princes Hwy), Warrnambool	At Permanent Finish Line & Memorial	14:02	14:46	15:43

START VENUE MAP



RACE ROUTE OUT OF AIRPORT



FINISH VENUE MAP



FEED ZONE DETAILS

FEED ZONE #1

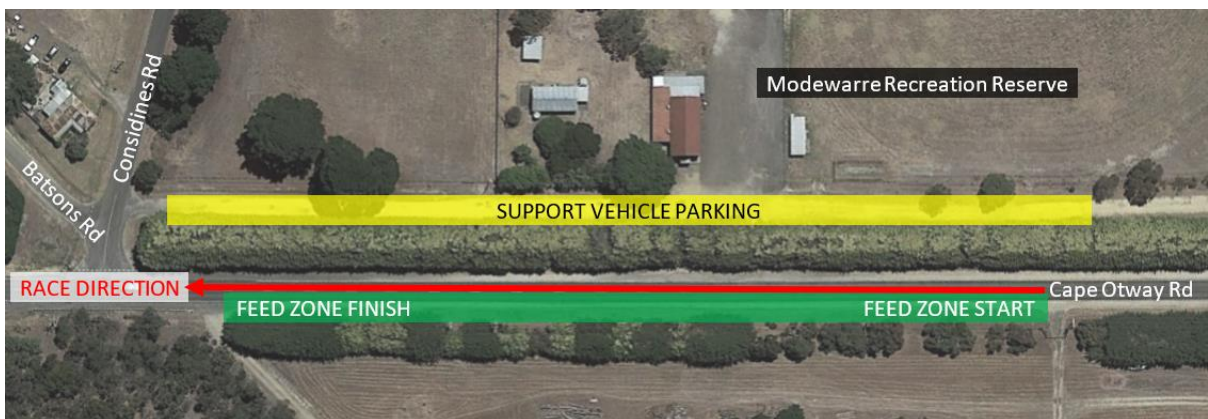
54.5 km – Cape Otway Rd, Modewarre

Expected First Rider: 9:16am (45 km/h)

Start at Property #915 LHS

VEHICLES TO PARK IN RECREATION RESERVE ONLY – NO PARKING ON SIDE OF ROAD

FEEDING ONLY PERMITTED FROM LEFT SIDE OF ROAD (RACE DIRECTION)



FEED ZONE #2

132.6 km – Irrewillipe Rd, Irrewillipe
 Expected First Rider: 11:00am (45 km/h)
 Start at Recreation Reserve

*VEHICLES TO PARK IN RECREATION RESERVE ONLY – NO PARKING ON SIDE OF ROAD
 FEEDING ONLY PERMITTED FROM LEFT SIDE OF ROAD (RACE DIRECTION)*



FEED ZONE #3

197.8 km – Great Ocean Rd, Port Campbell
 Expected First Rider: 12:27pm (45 km/h)
 Start at Rifle Club Driveway

*VEHICLES TO PARK IN RIFLE RANGE CARPARK ONLY – NO PARKING ON SIDE OF ROAD
 FEEDING ONLY PERMITTED FROM LEFT SIDE OF ROAD (RACE DIRECTION)*



CONTINGENCY FEED ZONE

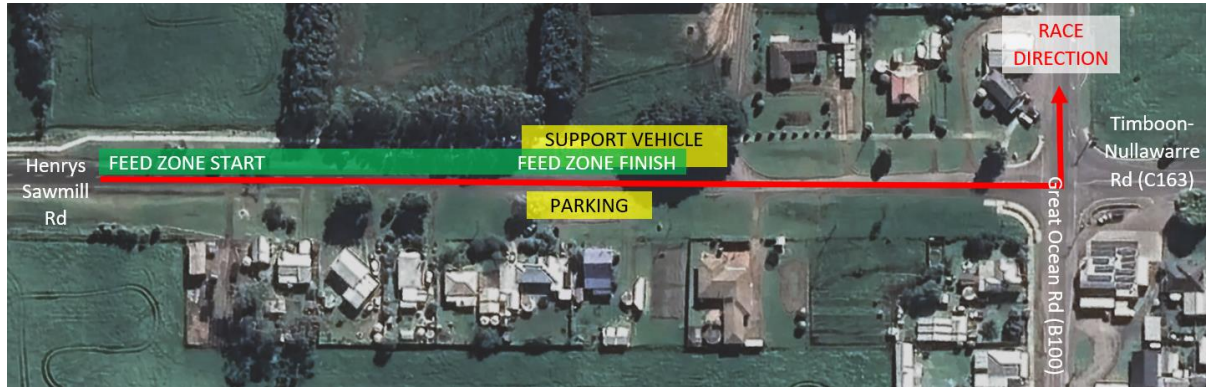
236.5 km – Henrys Sawmill Rd, Nullawarre

Expected First Rider: 1:19pm (45 km/h)

Start at Public Toilets

VEHICLES TO PARK IN REST STOP

FEEDING ONLY PERMITTED FROM LEFT SIDE OF ROAD (RACE DIRECTION)



SECTION 5 – CONVOY CODE OF CONDUCT

The Convoy Code of Conduct applies to all vehicles involved in Race Convoy operations whether involved with the conduct of the race itself or while performing a role that interfaces with the convoy operations and/or occurs within the race envelope:

- Team Cars
- Judge & Commissaire Cars & Motorbikes
- Media & Broadcast Cars
- Photographer & Broadcast Motorbikes
- Medical Cars
- Race Director Vehicle
- Technical Director Vehicle
- Neutral Support Cars & Motorbikes
- Police Cars & Motorbikes
- Moto Safety Marshal & Moto Escort Motorbikes
- Lead Car & Sag Wagon

COMPULSORY CONVOY BEHAVIOURS

Applicable to all drivers within the race convoy

Note: the term 'vehicle' refers to both cars and motorbikes

Note: the term 'driver' applies to both car drivers and motorbike pilots

1. All drivers must attend the Team Managers Meeting or Drivers Briefing to undergo a race specific convoy operations briefing. Details of these meetings/briefings can be found in *Section 2 – Event Details*. If these meeting clashes with other activities, it is the responsibility of the driver to liaise with the PCP to receive these instructions separately.
2. Failure to attend the Team Managers Meeting or Drivers Briefing or actively seek out these instructions from the PCP may result in not being able to start the event.
3. Misconduct in the convoy will result in action being taken by the organisation or Commissaires. Misconduct that breaches AusCycling/UCI regulations will be disciplined by the PCP. Misconduct that breaches overall race safety and integrity will be disciplined by the Race Director as appropriate.
4. At the head of the Convoy is the Lead Car. Vehicles ahead of this vehicle are considered out of the Convoy.
5. The tail of the Convoy is the Police Tail Vehicle. Vehicles behind this vehicle are considered out of the Convoy.
6. Drivers (particularly cars) must gain permission to pass any group of riders from the commissaire behind that group.
7. When passing through the convoy, vehicles must travel no more than 20km/h faster than the riders, and use short sharp toots of the horn to indicate passing. Drivers must check mirrors before deviating left or right.
8. Wherever possible vehicles should pass the riders on the right-hand side of the riders as per normal Australian road rules. When passing on the left-hand side, drivers must use extreme care and ensure that the rider is fully aware of your intentions to take the inside line. Drivers must check mirrors before deviating left or right.

9. When travelling within the race envelope, drivers must not travel more than 20km/h above the speed of the race. Due to high density foot and vehicle traffic, particularly around schools and shopping strips, safety is paramount. To travel any more than 20km/h above the speed of the race, is dangerous, unnecessary and unacceptable. Unnecessary speeding will be severely dealt with.
10. Vehicles must not overtake riders within the final 1km approach to a sprint or the final 10km of the race.
11. All convoy cars must deviate at the designated deviation point at the finish line under the direction of event officials or staff. Exceptions to this rule are Commissaires, Medical, Broadcast Motorbikes (under specific direction of the Commissaires) and Sag Wagon. Details of designated deviation points can be found in *Section 4 – Race Details*.
12. Convoy vehicles must not be more than 1.70 metres high
13. Convoy vehicles must adhere to the Convoy Assembly Times & Locations as listed in the *Section 4 – Race Details*.

SECTION 6 – APPENDICES

NON-CONVOY VEHICLE DETOUR – FEED ZONE #1

Feed Zone: 54.5 km – Cape Otway Rd, Modewarre
Location: Modewarre Recreation Reserve
Expected First Rider: 9:16am (45 km/h)

Driving Time from Start Line: 34 mins (50.2 km)

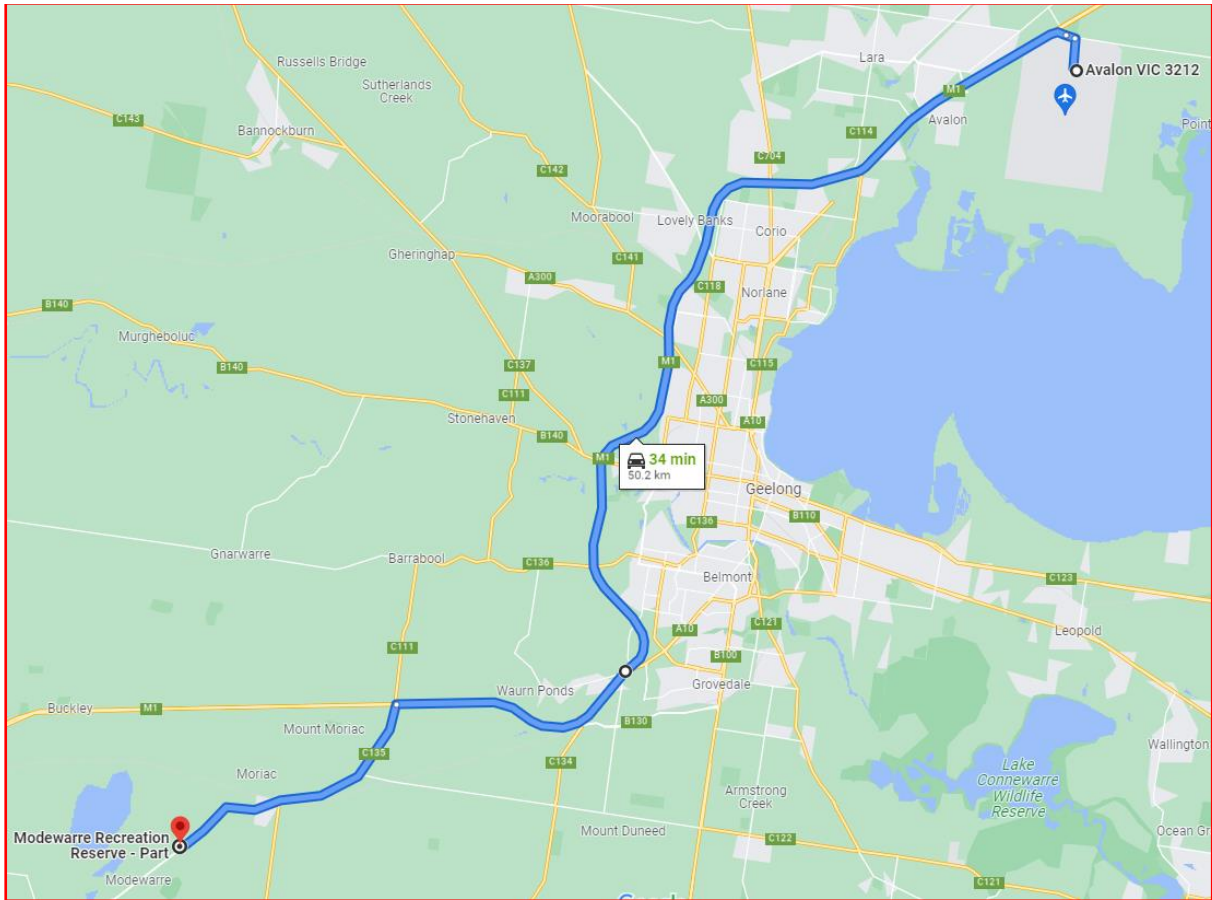
Route from Start Line:

DEPART Avalon Airport – North on Canberra Dr [400 m]
LEFT Beach Rd [900 m]
VEER LEFT Princes Fwy (M1) [39.3 km]
LEFT Cape Otway Rd (C135) [9.3 km]
THROUGH Moriac
RIGHT Considines Rd [20 m]
ARRIVE Modewarre Recreation Reserve

IMPORTANT NOTES:

- It is recommended for vehicles to leave prior to race start to avoid been caught behind race along Princes Fwy for 23 kilometres until Hamilton Hwy (if not leaving prior to race start, vehicles will be held for 5 minutes after the race start)
- Vehicles on Cape Otway Rd must pass Hortips Rd (53.8 km into race) before first riders (expected 9:15am [45 km/h]) to reach the Modewarre Feed Zone before the race

Map from Start Line:



NON-CONVOY VEHICLE DETOUR – FEED ZONE #2

Feed Zone: 132.6 km – Irrewillipe Rd, Irrewillipe
Location: Irrewillipe Recreation Reserve
Expected First Rider: 11:00am (45 km/h)

Driving Time from Feed Zone #1: 53 mins (74.9 km)

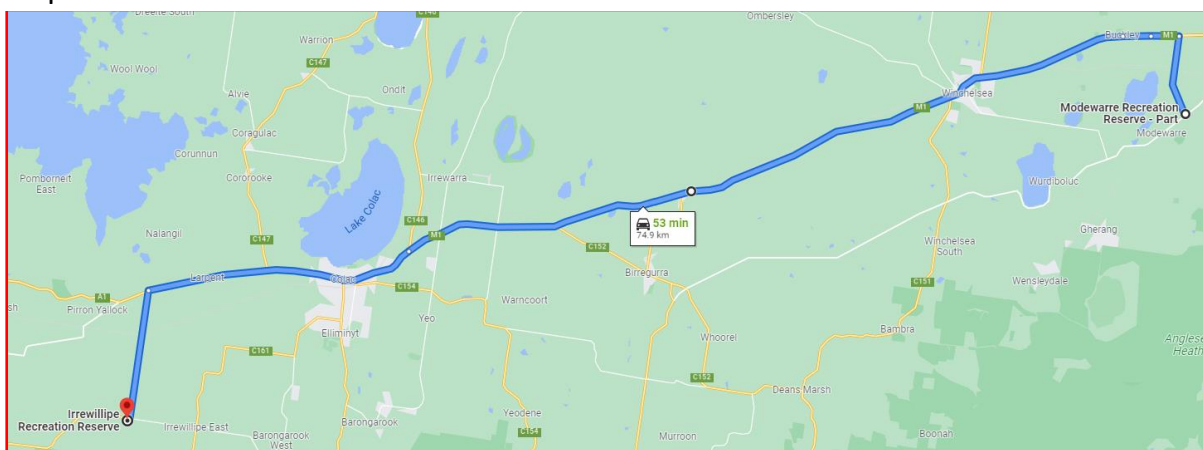
Route from Feed Zone #1:

DEPART Modewarre Recreation Reserve – North on Considines Rd [4.6 km]
LEFT Princes Hwy (M1) [62.6 km]
THROUGH Winchelsea
THROUGH Colac
LEFT Timboon-Colac Rd (C163) [7.4 km]
STRAIGHT Tomahawk Creek Rd (*Cross Irrewillipe Rd*) [200 m]
ARRIVE Irrewillipe Recreation Reserve

IMPORTANT NOTES:

- Vehicles on Considines Rd at the intersection with Hortips Rd (52.6 km into race), upon departure from Modewarre Feed Zone, will be held for the race envelope and rolling road closure to pass and must TRAVEL CAUTIOUSLY along Considines Rd for riders outside of the race envelope (vehicles will be travelling in opposite race direction along Considines Rd until Princes Hwy for 3.8 km)
- Vehicles on Princes Hwy must pass Warncoort-Birregurra Rd (96.5 km into race) before first riders (expected 10:12am [45 km/h]) to reach avoid being caught behind race along Princes Hwy for 6.3 km until Colac

Map from Feed Zone #1:



NON-CONVOY VEHICLE DETOUR – FEED ZONE #3

Feed Zone: 197.8 km – Great Ocean Rd, Port Campbell
Location: Port Campbell Rifle Club
Expected First Rider: 12:27pm (45 km/h)

Driving Time from Feed Zone #2: 1 h 5 mins (85.6 km)

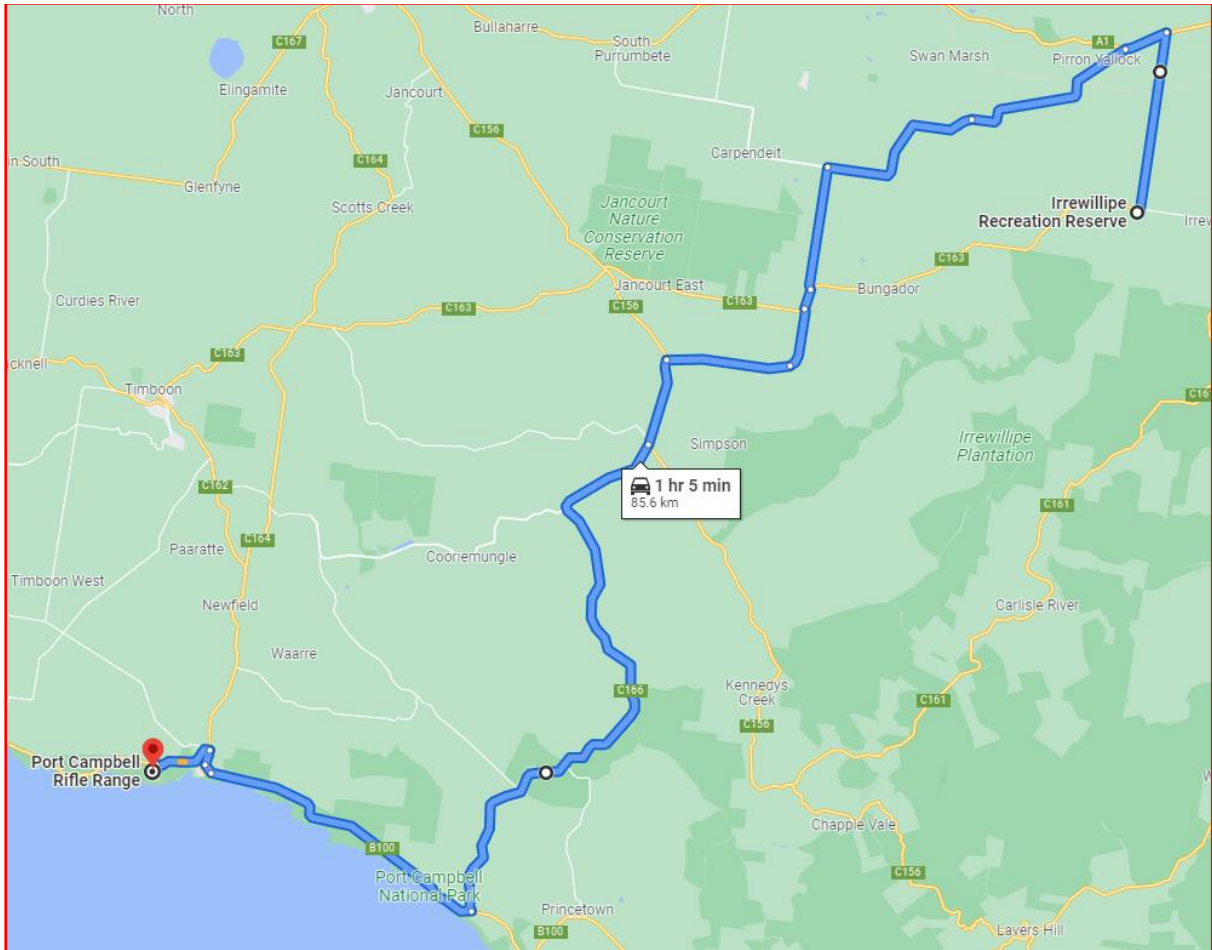
Route from Feed Zone #2:

DEPART Irrewillipe Recreation Reserve – North on Tomahawk Creek Rd [200 m]
 STRAIGHT Timboon-Colac Rd (C163) (*Cross Irrewillipe Rd*) [7.4 km]
 LEFT Princes Hwy (A1) [1.8 km]
 LEFT Swan Marsh Rd [7.8 km]
 CONTINUE Swan Marsh Rd becomes Carpendeit-Bungador Rd [7.5 km]
 LEFT Speedway Rd [5.2 km]
 RIGHT Timboon-Colac Rd (C163) [800 m]
 LEFT Majestic Rd [2.6 km]
 CONTINUE Majestic Rd becomes Coradjil Rd [5.2 km]
 LEFT Lavers Hill-Cobden Rd (C156) [3.6 km]
 THROUGH Simpson
 CONTINUE Lavers Hill-Cobden Rd becomes Princetown Rd (C166) [26.8 km]
 RIGHT Great Ocean Rd (B100) [12.8 km]
 RIGHT McCue St [400 m]
 THROUGH Port Campbell
 RIGHT Great Ocean Rd (B100) [700 m]
 LEFT To continue on Great Ocean Rd (B100) [2.8 km]
 ARRIVE Port Campbell Rifle Range

IMPORTANT NOTES:

- Vehicles will be held at Irrewillipe Rd prior to departure from Irrewillipe Feed Zone for race envelope and rolling road closure to pass, and must DEPART CAUTIOUSLY at Irrewillipe Rd for riders outside of the race envelope (vehicles will cross Irrewillipe Rd to reach Timboon-Colac Rd)
- Vehicles on Speedway Rd turning right at the intersection onto Timboon-Colac Rd may be held for the race envelope and rolling road closure to pass and must TRAVEL CAUTIOUSLY along Timboon-Colac Rd for riders outside of the race envelope (vehicles will be travelling in race direction along Timboon-Colac Rd until Majestic Rd for 800 m)

Map from Feed Zone #2:



NON-CONVOY VEHICLE DETOUR – CONTINGENCY FEED ZONE

Feed Zone: 236.5 km – Henrys Sawmill Rd, Nullawarre

Location: Nullawarre Rest Area/Public Toilets

Expected First Rider: 1:19pm (45 km/h)

Driving Time from Feed Zone #3: 28 mins (35.5 km)

Route from Feed Zone #3:

DEPART Port Campbell Rifle Range – East on Great Ocean Rd (B100) (opposite course direction) [2.6 km]

LEFT Curdievale-Port Campbell Rd [17.5 km]

LEFT Timboon-Curdievale Rd / Boggy Creek Rd [2 km]

RIGHT Whiskey Creek Rd [4.7 km]

LEFT Timboon-Nullawarre Rd (C163) [8.6 km]

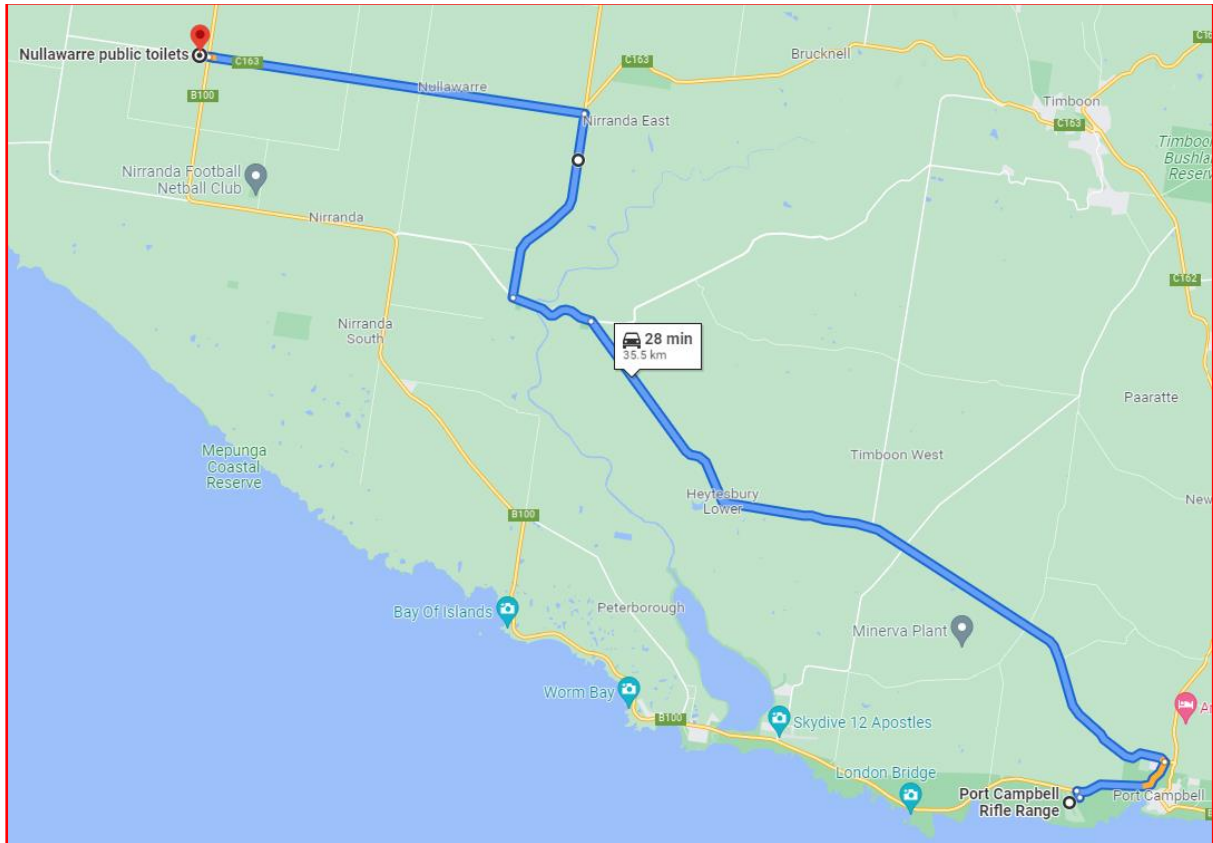
STRAIGHT Henrys Sawmill Rd (*Cross Great Ocean Rd*) [200 m]

ARRIVE Nullawarre Rest Area/Public Toilets

IMPORTANT NOTES:

- Vehicles will be held at Port Campbell Feed Zone prior to departure for race envelope and rolling road closure to pass and must DEPART and TRAVEL CAUTIOUSLY along Great Ocean Rd for riders outside of the race envelope (vehicles will be travelling in opposite race direction along Great Ocean Rd until Curdievale-Port Campbell Rd for 2.6 km)

Map from Feed Zone #3:



NON-CONVOY VEHICLE DETOUR – FINISH

Finish: 269.7 km – Raglan Parade, Warrnambool
 Location: Darling St
 Expected First Rider: 2:03pm (45 km/h)

Driving Time from Contingency Feed Zone: 27 mins (34.2 km)

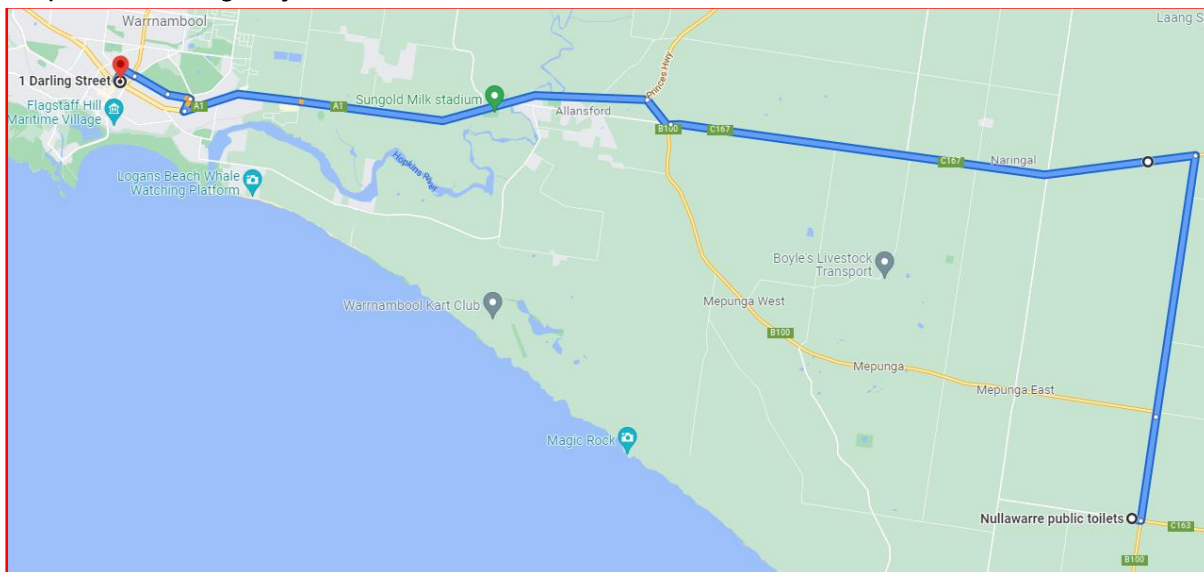
Route from Contingency Feed Zone:

DEPART	Nullawarre Rest Area/Public Toilets – East on Henrys Sawmill Rd (course direction) [200m]
LEFT	Great Ocean Rd (B100) [2.4 km]
RIGHT	Bartons Rd [5.9 km]
LEFT	Cobden-Warrnambool Rd (C167) [12 km]
RIGHT	Great Ocean Rd (B100) [800 m]
LEFT	Princes Hwy (A1) [10.5 km]
RIGHT	Derby St [300 m]
LEFT	Grieve St [500 m]
CONTINUE	Grieve St becomes Coulstock St [800 m]
STRAIGHT	Princess St (<i>Cross Cramer St</i>) [300 m]
LEFT	Liebig St [300 m]
LEFT	Raglan Parade (Princes Hwy) (A1) [50 m]
LEFT	Darling St [50 m]
ARRIVE	Darling St Carpark

IMPORTANT NOTES:

- Vehicles will be held at Nullawarre Feed Zone prior to departure for race envelope and rolling road closure to pass and must DEPART and TRAVEL CAUTIOUSLY along Henrys Sawmill Rd and Great Ocean Rd for riders outside of the race envelope (vehicles will be travelling in race direction along Henrys Sawmill Rd and Great Ocean Rd until Bartons Rd for 2.4 km).
- Vehicles on Cobden-Warrnambool Rd turning right at the intersection onto Great Ocean Rd may be held for the race envelope and rolling road closure to pass and must TRAVEL CAUTIOUSLY along Great Ocean Rd for riders outside of the race envelope (vehicles will be travelling in race direction along Great Ocean Rd until Ziegler Parade for 100 m)

Map from Contingency Feed Zone:



Driving Time from Feed Zone #3: 55 mins (71.7 km)

Route from Feed Zone #3:

DEPART	Port Campbell Rifle Range – East on Great Ocean Rd (B100) (opposite course direction) [2.6 km]
LEFT	Curdievale-Port Campbell Rd [17.5 km]
LEFT	Timboon-Curdievale Rd / Boggy Creek Rd [2 km]
RIGHT	Whiskey Creek Rd [4.7 km]
CONTINUE	Whiskey Creek Rd becomes Ayresford Rd (C168) [10.4 km]
LEFT	Cobden-Warrnambool Rd (C167) [20.9 km]
RIGHT	Great Ocean Rd (B100) [800 m]
LEFT	Princes Hwy (A1) [10.5 km]
RIGHT	Derby St [300 m]
LEFT	Grieve St [500 m]
CONTINUE	Grieve St becomes Coulstock St [800 m]
STRAIGHT	Princess St (<i>Cross Cramer St</i>) [300 m]
LEFT	Liebig St [300 m]
LEFT	Raglan Parade (Princes Hwy) (A1) [50 m]
LEFT	Darling St [50 m]
ARRIVE	Darling St Carpark

IMPORTANT NOTES:

- Vehicles will be held at Port Campbell Feed Zone prior to departure for race envelope and rolling road closure to pass and must DEPART and TRAVEL CAUTIOUSLY along Great Ocean Rd for riders outside of the race envelope (vehicles will be travelling in opposite race direction along Great Ocean Rd until Curdievale-Port Campbell Rd for 2.6 km)
- Vehicles on Cobden-Warrnambool Rd turning right at the intersection onto Great Ocean Rd may be held for the race envelope and rolling road closure to pass and must TRAVEL CAUTIOUSLY along Great Ocean Rd for riders outside of the race envelope (vehicles will be travelling in race direction along Great Ocean Rd until Ziegler Parade for 100 m)

Route from Feed Zone #3:
